



**2021 ANNUAL SUMMARY REPORT  
CROSS CONNECTION & BACKFLOW PREVENTION**

Received  
Mar 20 2022  
Cross Connection

Please fill out the Annual Summary Report accurately and completely with **data from 2021**. Keep a completed copy for your records.

**PLEASE ANSWER ALL QUESTIONS. INCOMPLETE REPORTS WILL DELAY PROCESSING.**

Return completed reports by **March 31, 2022**

Email: [cross.connection@dhsosha.state.or.us](mailto:cross.connection@dhsosha.state.or.us), Fax: 971-673-0694

Mail: DWS-Cross Connection; 800 NE Oregon Street, Suite 640; Portland, OR 97293

1. **Water System Name:** MILL MAR ESTATES PWS ID# 41-01472

2. **What size is your water system?**  Small (1-299 connections)  Large (300+ connections)

3. **ASR Contact Information:** (if there are questions about the ASR who should we contact?)

Name: DAN PERKINS

Email: purewateroperations@yahoo.com Phone #: 541-941-3951

4. **Customer Base:** Who does your water system serve? Count each service connection only once, include connections with and without a backflow assembly.

a. Do you have any residential connections in your water system?  Yes  No How many: 25

b. Do you have any high hazard connections in your water system?  Yes  No How many: \_\_\_\_\_

c. Do you have any other types of connections not listed above?  Yes  No How many: \_\_\_\_\_

Comments: \_\_\_\_\_

5. An **enabling authority** is required for all community water systems. The enabling authority allows for a water system to discontinue service for various reasons. A sample enabling authority is available for small water systems on our website: [www.healthoregon.org/crossconnection](http://www.healthoregon.org/crossconnection). If you have not submitted an enabling authority to the State, please complete one and submit it as soon as possible.

6. **Does your water system have an enabling authority?**  Yes  No (see note above) ON FILE

7. **Was your enabling authority revised within the last year?**

Yes, email a copy to the Cross Connection program [cross.connection@state.or.us](mailto:cross.connection@state.or.us)  No

**QUESTIONS 8 - 10 are for LARGE SYSTEMS ONLY** (Large = 300+ Service Connections) and are specific to the required written backflow prevention program plan outlined in OAR 333-061-0070(9)(b)

**8. Certified Cross Connection Specialist Information:**

Water system Employee       Contracted service

Name: DAN PERKINS      Cert #: 1860

Email Address: purewateroperations@yahoo.com

Phone #: 541-941-3951      Alt Phone #: 541-601-2772

9. Does your water system have a current written backflow prevention program plan?       Yes     No

**10. Does the backflow prevention plan include the following:**

a. A list of premises where health hazard cross connections exist, including, but not limited to, those listed in Table 42.       Yes     No

b. Procedure for continually evaluating the degree of hazard posed by a water users premises.       Yes     No

c. Procedure for notifying the water user if a non-health hazard or health hazard is identified, and for informing the water user of any corrective action required.       Yes     No

d. The type of protection required to prevent backflow into the public water supply, commensurate with the degree of hazard that exists on the water user's premises.       Yes     No

e. A description of what corrective actions will be taken if a water user fails to comply with the water suppliers cross connection control requirements.       Yes     No

f. Current records of approved backflow prevention assemblies installed:       Yes     No

i. inspections completed,       Yes     No

ii. backflow prevention assembly test results on backflow prevention assemblies,       Yes     No

iii. verification of current backflow assembly tester certification       Yes     No

g. A public education program about cross connection control.       Yes     No

11. Are there any backflow assemblies or devices installed in your water system?     Yes     No

12. Do you have any **Reduced Pressure Backflow Prevention Assemblies** (RP, RPBA, & RPDA) installed in your water system?     Yes     No    *(if you answered yes, answer the questions below)*

a. How many assemblies are installed in your water system?      N/A

b. How many assemblies were tested?      ↓

c. How many assemblies passed their annual test?      ↓

d. How many assemblies failed their annual test?      ↓

Comments: \_\_\_\_\_

\_\_\_\_\_

\_\_\_\_\_

13. Do you have any **Double Check Backflow Prevention Assemblies** (DC, DCVA, & DCDA) installed in your water system?  Yes  No (if you answered yes, answer the questions below)

a. How many assemblies are installed in your water system?

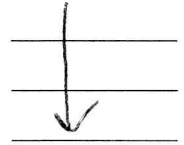
N/A

b. How many assemblies were tested?

c. How many assemblies passed their annual test?

d. How many assemblies failed their annual test?

e. Comments:



14. Do you have any **Pressure Vacuum Breaker Assemblies** (PVB, PVBA, & SVBA) installed in your water system?

Yes  No (if you answered yes, answer the questions below)

a. How many assemblies are installed in your water system?

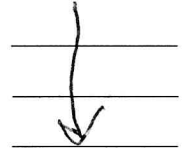
N/A

b. How many assemblies were tested?

c. How many assemblies passed their annual test?

d. How many assemblies failed their annual test?

e. Comments:



I certify the information provided is true to the best of my knowledge. Providing false information may result in penalties to the individual and to the water system.

Printed Name: DAN PERKINS

Title: OPERATOR

Signature: 

Date: 3-19-22

Return completed reports by **March 31, 2022**

**Email:** [cross.connection@dhsosha.state.or.us](mailto:cross.connection@dhsosha.state.or.us), **Fax:** 971-673-0694 or

**Mail:** DWS-Cross Connection; 800 NE Oregon Street, Suite 640; Portland, OR 97293

**Questions?** [cross.connection@dhsosha.state.or.us](mailto:cross.connection@dhsosha.state.or.us) 971-673-0321

### ◆ **Drinking Water Updates** ◆

October 2018 was the last printed Pipeline! If you would like to continue receiving the Pipeline newsletter, in addition to other important notifications sign up for Drinking Water Email Alerts! Go to [www.healthoregon.org/dws](http://www.healthoregon.org/dws) and click on the '**Subscribe to Email Alerts**' button!

To get Cross Connection notifications, go to [www.healthoregon.org/crossconnection](http://www.healthoregon.org/crossconnection) and click on the '**Subscribe to Email Alerts**'