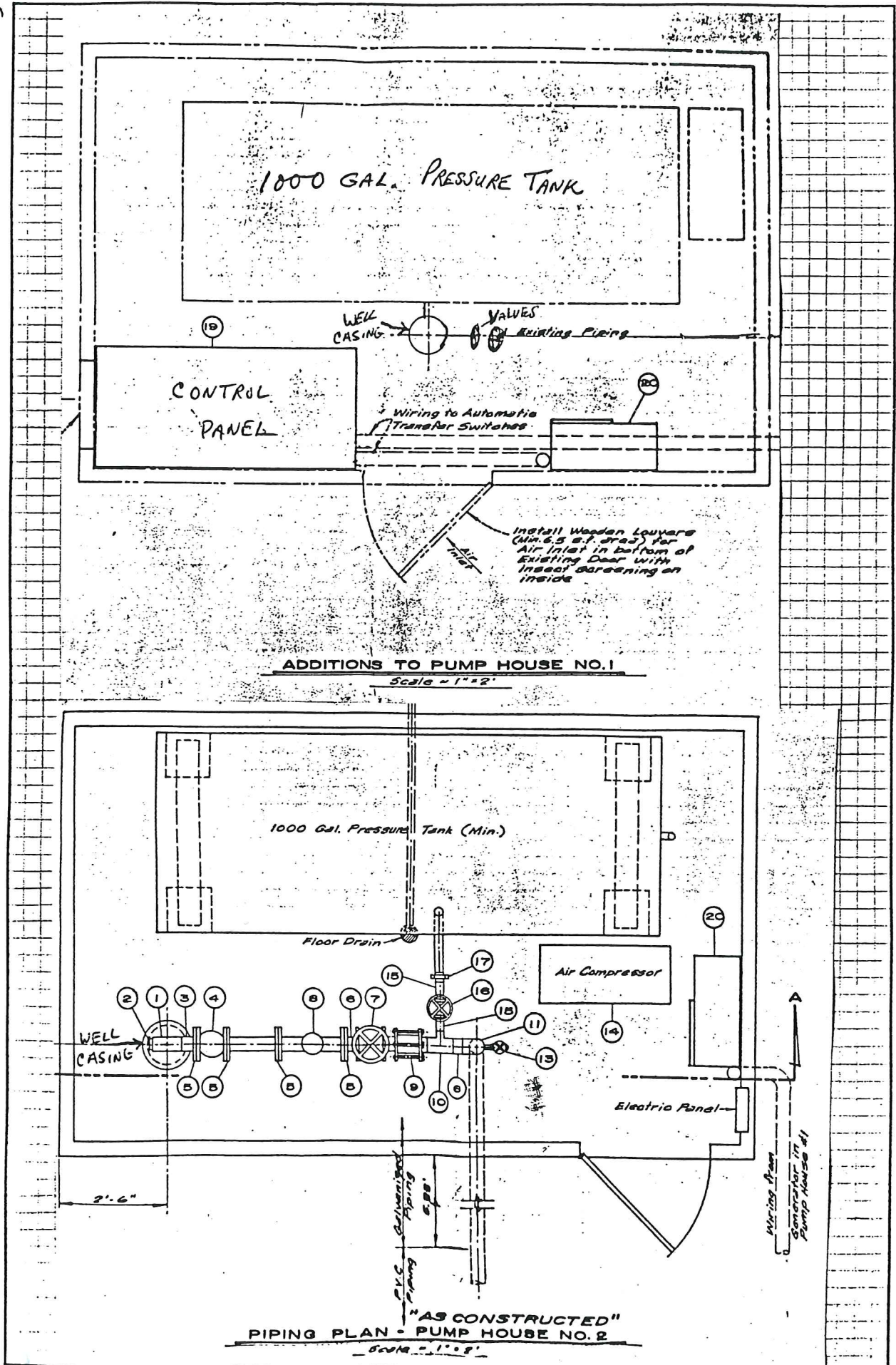


Staffordshire MHP 41-00290

Staffordshire is a manufactured home community consisting of approximately one hundred thirteen (113) acres on the Coast Fork of the Willamette River. It is within three (3) miles of Pleasant Hill Shopping area and five (5) miles from Eugene. There are ninety nine (99) homes with one hundred and seventy (170) residents. It is designed for adult living, fifty five (55) years and older. We do comply with the Fair Housing Act. We are governed by Protective Covenants, Conditions, and Restrictions (CCR's), Bylaws and Rules. All business affairs are conducted and managed by a Board of Directors.

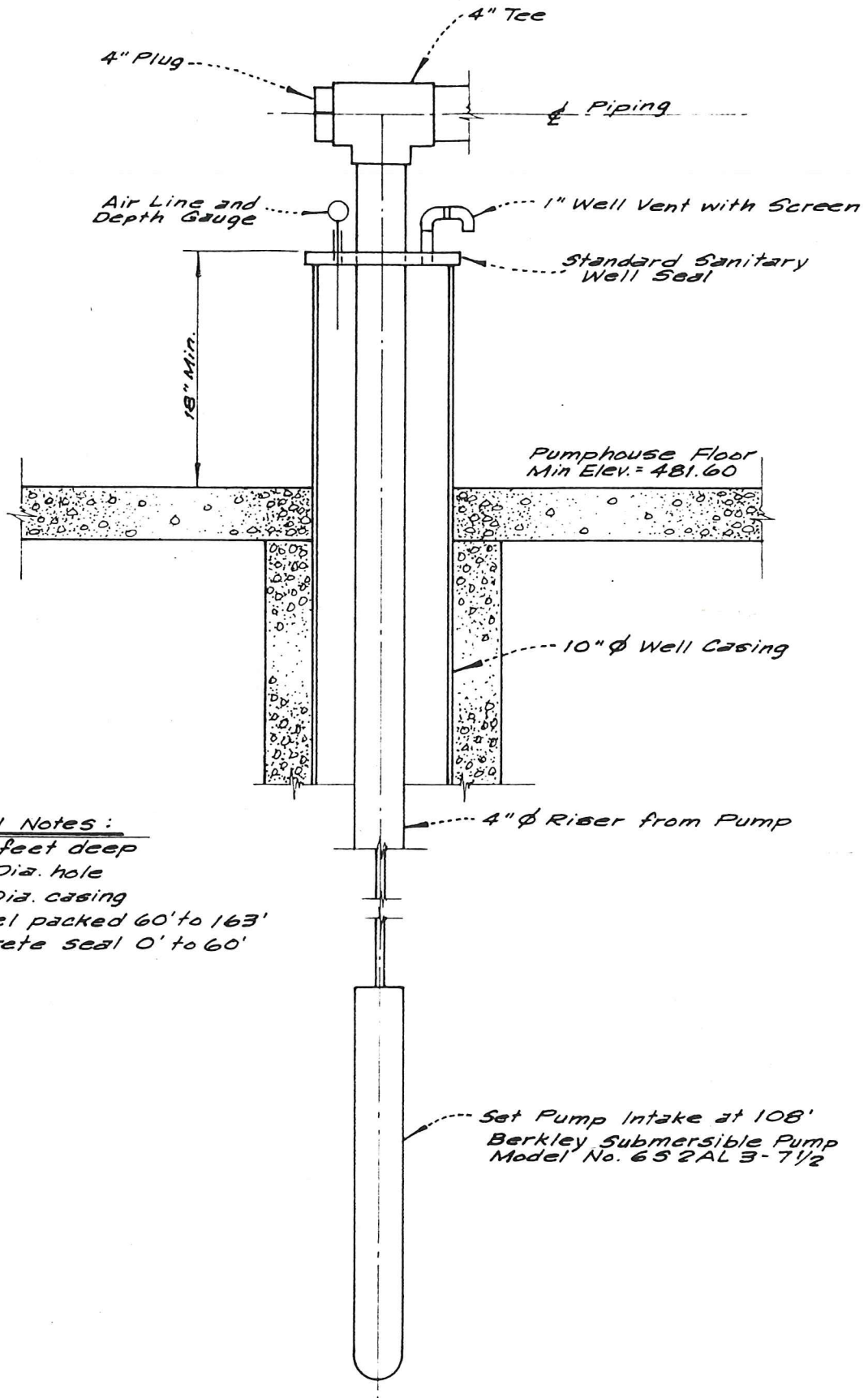
We have two (2) separate entities that manages the overall operations of Staffordshire. First, the Staffordshire Homeowners Association. Second, Staffordshire Water Systems, Inc. All members (Home Owners) share in the cost of operation and maintenance of all common facilities and equipment necessary to support the day-to-day operations of the Park.



ATCH-1

suction is a  
has let by  
firm for  
c.

and  
9.



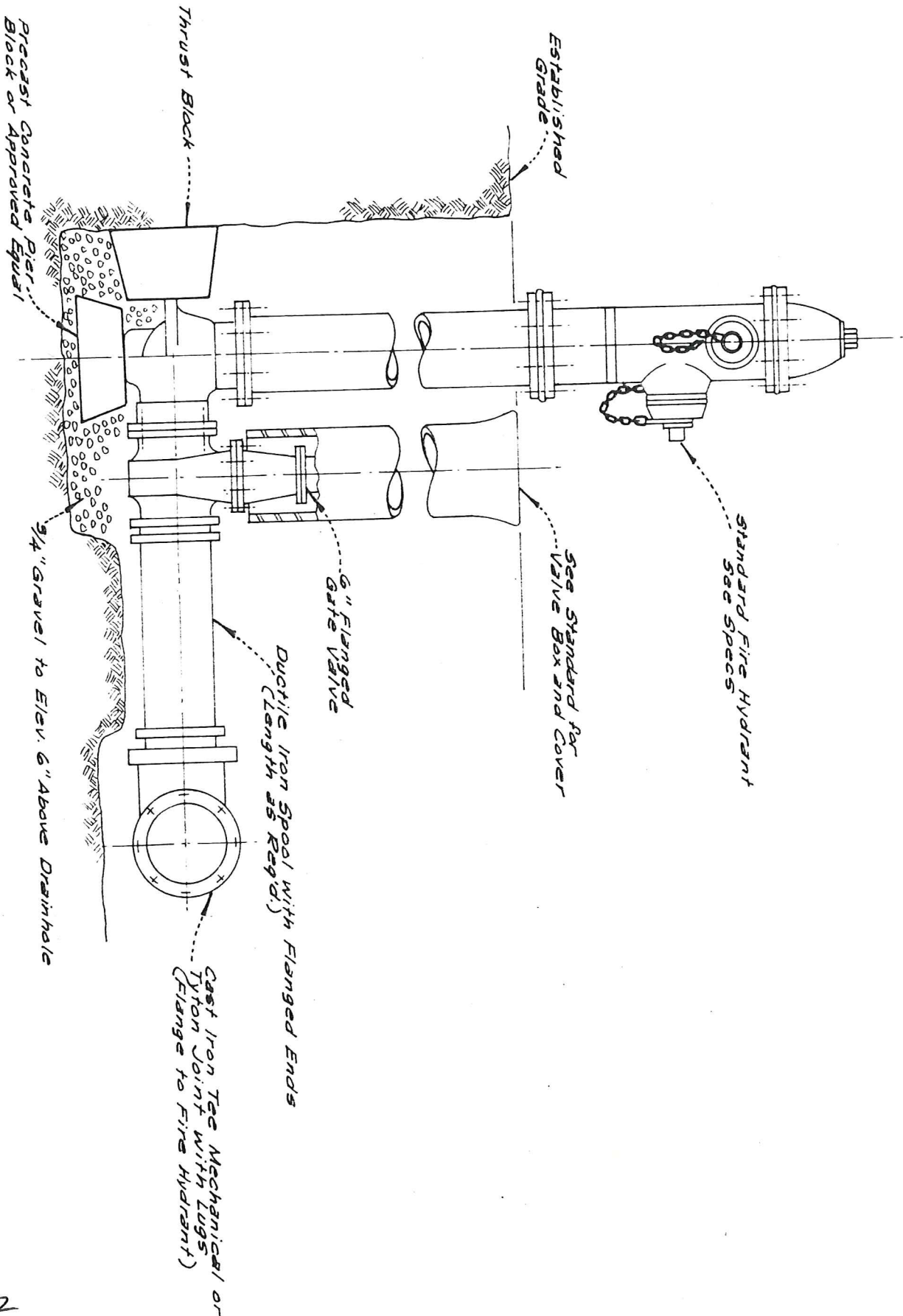
Well Notes:  
163 feet deep  
18" Dia. hole  
10" Dia. casing  
Gravel packed 60' to 163'  
Concrete seal 0' to 60'

Set Pump Intake at 108'  
Berkley Submersible Pump  
Model No. 652AL3-7 1/2

WELL SEAL DETAIL

ADDITIONS TO PUMP HOUSE NO.1

Scale 1"=2'



TYPICAL FIRE HYDRANT ASSEMBLY

Not to Scale

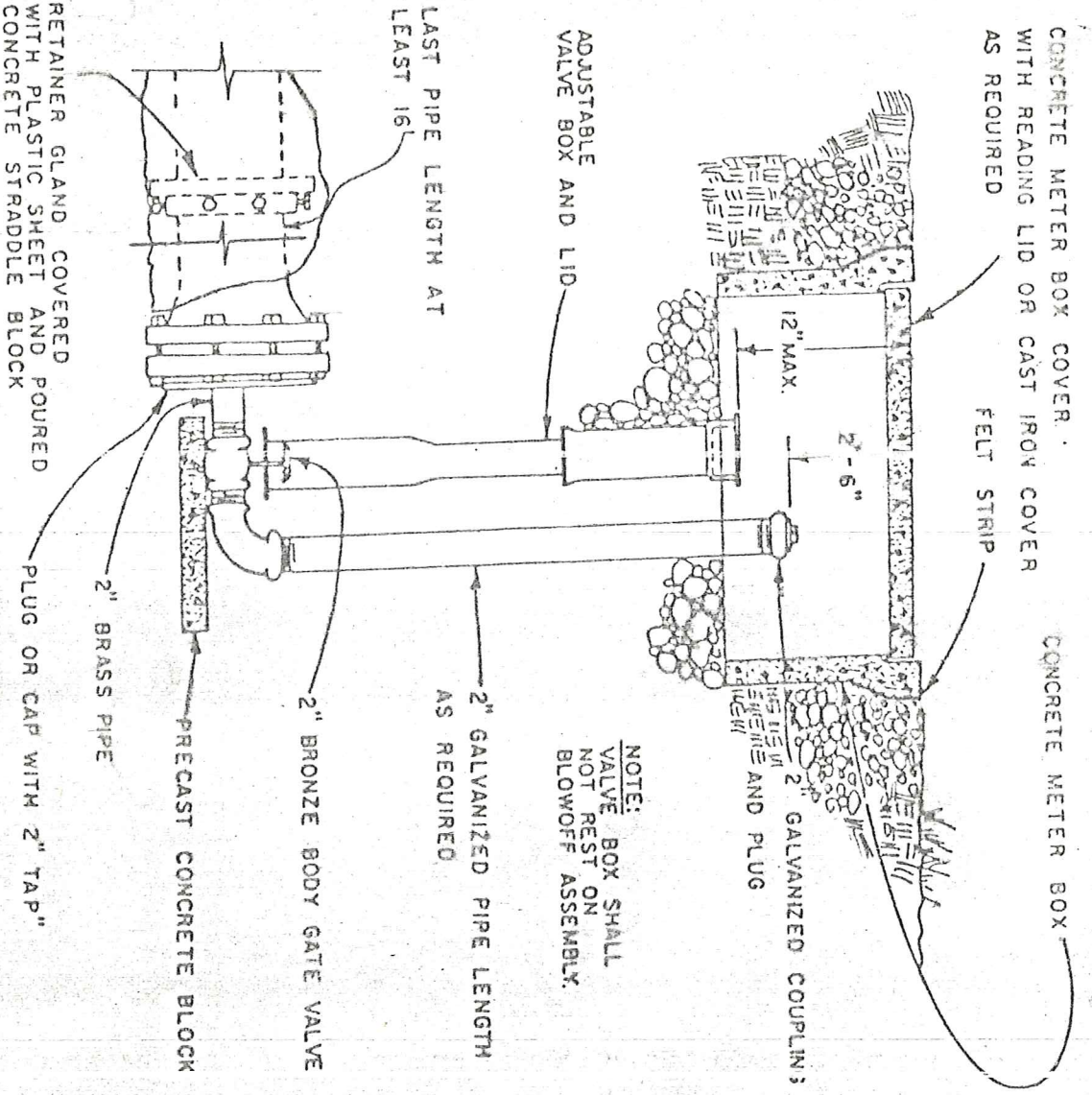
ATCH 2

ATCH # 2



# TYPICAL DISTRIBUTION PIPING

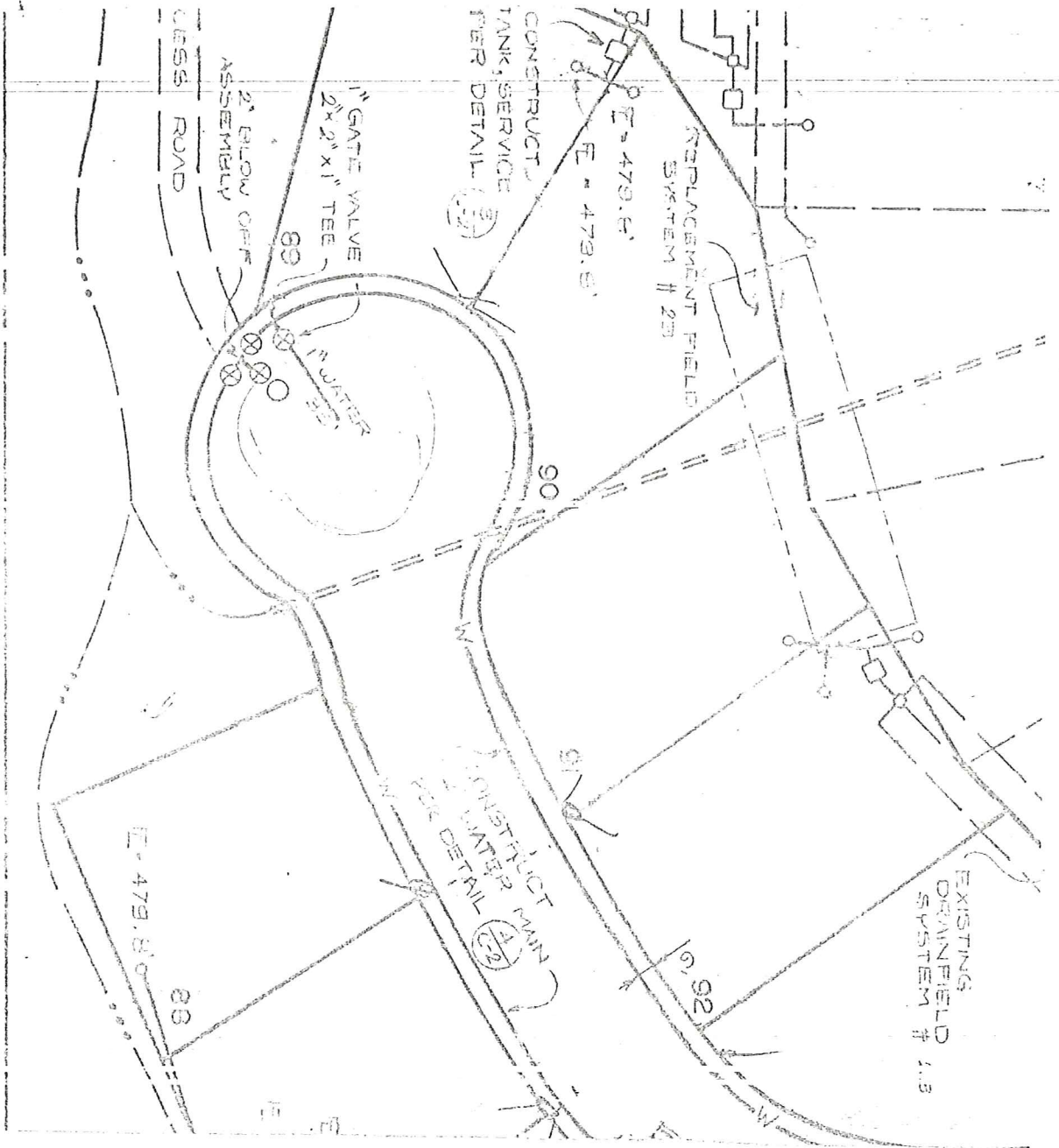
NO SCALE



# BLOW OFF ASSEMBLY

NO SCALE

ATCH 3-A



Paved # 2  
 125 GPM

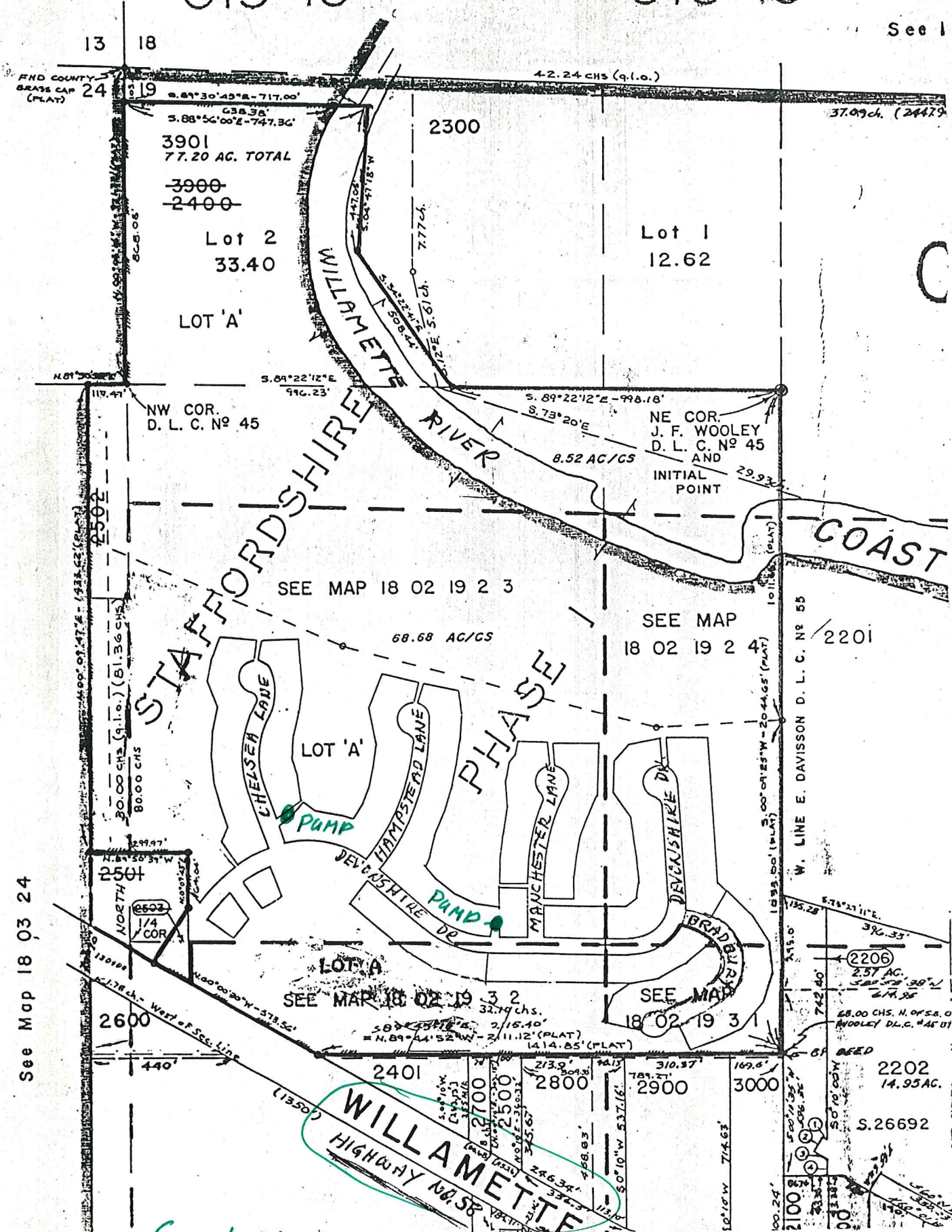
ATCH 3-B



019-19

019-15

See 1



See Map 18 03 24

GEN INFO





GEN INFO.