



PUBLIC HEALTH DIVISION
Drinking Water Services

Tina Kotek, Governor

Oregon
Health
Authority

800 NE Oregon St, St. 640
Portland, OR 97232

971-673-0405

www.healthoregon.org/DWP

November 29, 2023

Matt Del Moro, PE, Project Engineer
HBH Consulting Engineers, Inc.
501 E First Street | Newberg, OR 97132
email: mdelmoro@hbh-consulting.com

Letter sent via e-mail only.

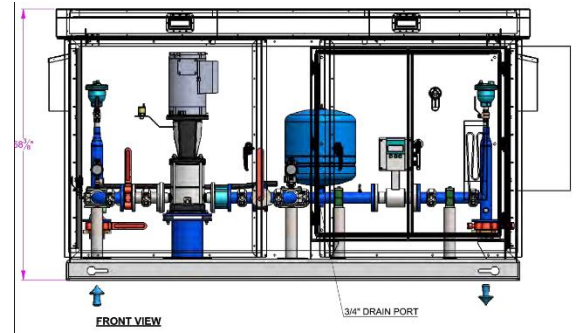
Re: Scenic View Drive Pump Station (PR#156-2022)
Rockaway Beach Water District (PWS ID# [00708](#))
Final Approval

Dear Mr. Del Toro

Thank you for your e-mail on November 27, 2023, to the Oregon Health Authority's Drinking Water Services (DWS) requesting final plan approval for the *Scenic View Drive Pump Station* for the Rockaway Beach Water District (PWS ID# 00708). The request addressed conditions in my [Conditional Approval letter dated October 28, 2022](#), and included a set of record drawings.

The project included a booster pump station supplied by a water main as shown in the project location map, schematic, and design criteria shown on the second page of this letter. **The project is granted Final Approval and the pump station may be placed into service.**

Thank you for your assistance in completing the plan review process and if you have any questions, please feel free to contact me at evan.e.hofeld@oha.oregon.gov or call me at 971-200-0288.



Sincerely,

Evan Hofeld, PE
Drinking Water Services

cc: Dan Emmerson, Rockaway Beach Water District
(publicworks@corb.us)
Jaime Craig, Tillamook Co Environmental Health
(Jcraig@co.tillamook.or.us)

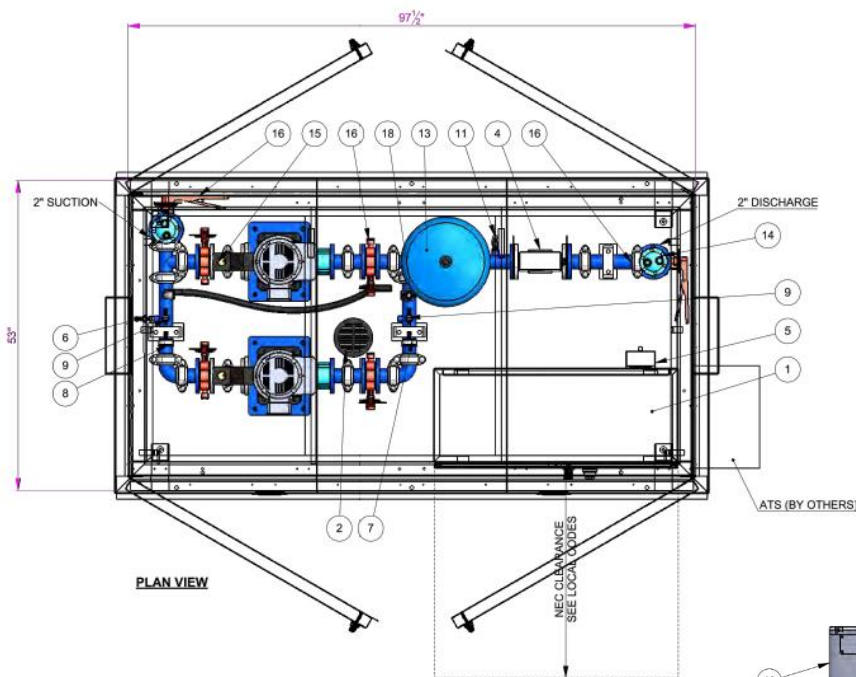
November 29, 2023

Scenic View Drive Pump Station for Rockaway Beach Water District (00708)

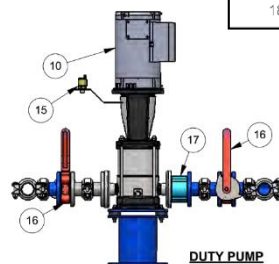
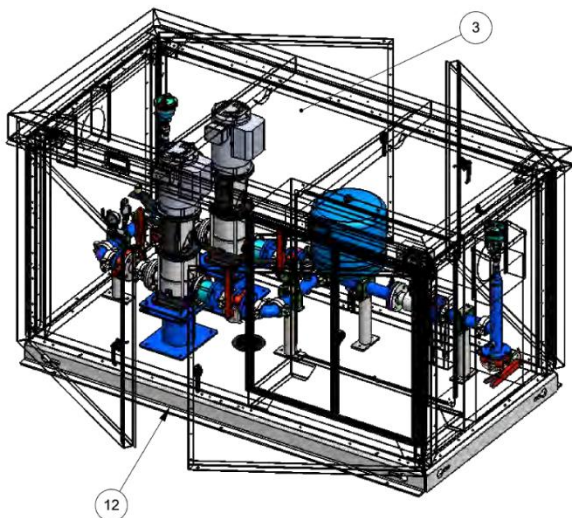
Final Approval – PR #156-2022

Page 2 of 2

The pump station plans were originally received on October 11, 2022, and included schematics clarifying the distribution system pressures in the vicinity of the pump station on October 14, 2022. Our office received the \$3,300 plan review fee payment on October 26, 2022. Subsequent to review, a [Conditional Approval letter dated October 28, 2022](#), was issued.

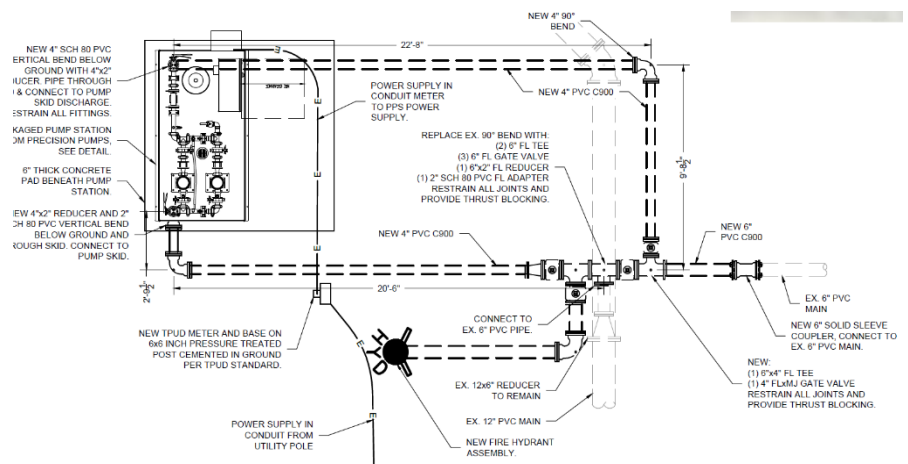


DESIGN SPECIFICATIONS			
Design Flow Rate:		50 GPM @ 60 PSI Boost	
Intake Pressure:		17 PSI	
Duty Pump Details:		5 HP/Pump 50 GPM @ 139 TDH	
Minimum Power:		240 Volt / 1 Phase	
Model #		V##V2V005X00050-060XXB241OAS-2-SS	
ITEM NO.	DESCRIPTION	Size	QTY.
1	CONTROL PANEL	42"x42"x16"	1
2	DRAIN, FLOOR	6"	1
3	ENCLOSURE, MARINE GRADE ALUMINUM W/ INSULATION (2" WALLS/ 4" CEILING)	48"x96"x48"	1
4	FLOW METER, BADGER	2"	1
5	HEATER, UTILITY	500W	1
6	LOW PRESSURE SWITCH	1/4"	1
7	PRESSURE GAUGE, 160PSI, NSF	2-1/2"	1
8	PRESSURE GAUGE, 100PSI, NSF	2-1/2"	1
9	PRESSURE TRANSDUCER, - 14.5 - 145PSI, NSF	1/4"	2
10	PUMP, VMS	5HP	2
11	SAMPLE TAP	3/4"	1
12	SKID, BENT	48x96	1
13	TANK, PRESSURE	10 Gal	1
14	VALVE, AIR RELIEF	3/4"	2
15	VALVE, AIR RELIEF, FV-4	1/2"	2
16	VALVE, BUTTERFLY, LUG, LEVER, 175 PSI	2"	6
17	VALVE, CHECK, SILENT	2"	2
18	VALVE, PRESSURE RELIEF	3/4"	1



RECORD DRAWING 11/27/2023

RECORD DRAWINGS ARE PER AS BUILT SURVEY SUPPLIED BY ADVANCED EXCAVATION, INC. AND SITE OBSERVATIONS.





501 E First Street
Newberg, Oregon 97132
phone 503-554-9553
fax 503-537-9554

November 27, 2023

Oregon Health Authority
800 NE Oregon Street #640
Portland, OR 97232-2162

Attn: Evan Hofeld, PE, Regional Engineer

Re: Scenic View Drive Pump Station (PR#156-2022)
City of Rockaway Beach (PWS ID#00708)
Final Approval

Dear Carrie,

On behalf of the City of Rockaway Beach, we are requesting Final Approval for the Scenic View Drive Booster Pump Station project, which consists of the installation of a new booster pump station supplied by Precision Pump Systems at the end of Scenic View Drive.

The construction of the project was completed in accordance with the submitted plans and specifications and Plan Review #152-2022. Record Drawings are included as an attachment. The following section is a list of the conditions included in Plan Review #152-2022.

Please do not hesitate in contacting Matt Del Moro, PE, or myself should you have any questions or need additional information.

Sincerely,
HBH Consulting Engineers, Inc.

Robert Henry, PE
City Engineer

Cc: Dan Emerson, Public Works Superintendent

City of Detroit
Temporary Water Treatment Plant
April 9, 2021
Page 2 of 33

Response to Conditions of Approval

- C *New facilities are disinfected and tested per the latest AWWA standards and OAR 333-061-0050(10).*
- R The facilities were disinfected and tested per the latest AWWA standards and OAR 333-061-0050(10).
- C *As the pump station draws water from a water main, should suction pressures be less than 20 psi in the supplying water main upon construction, an explanation as to the severity of the low-pressure conditions and plans to mitigate low pressure in the main shall be submitted prior to Final Approval.*
- R The pump station was installed with a low-pressure cutoff switch identified by item 6 on sheet C-6. The low-pressure cutoff switch was set to be 17 psi as measured at the pump station. The water main in this location is approximately 10 ft deep. A low-pressure cutoff point of 17 psi would shut the pump station down when the main pressure drops below 21 psi. The low-pressure cutoff switch is adjustable by City personnel.